



LED SYSTEM<sup>®</sup>  
PROFESSIONAL LED LIGHTING



## L25 ledprofiel

Sluit naadloos aan op 25mm kabelgoot

### Art.nr

EU-1217.2500	Ledprofiel standaard
EU-1017.2500	Ledprofiel met schroefgaten

### Afmetingen

2500 x 25 x 9,8 mm



## Afdekkappen

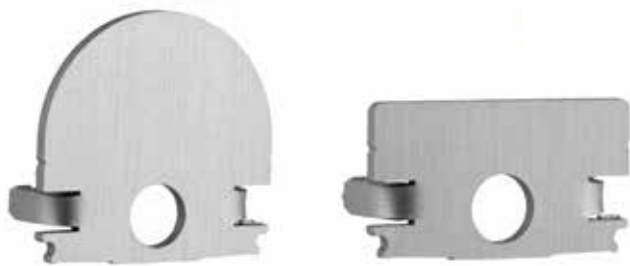
Rond: Egaal licht vanaf 60 leds .mtr

Vlak: Egaal licht vanaf 120 leds .mtr

Lichtdoorlatendheid: opaal 75% / helder 95%

### Art.nr

Art.nr		Afmeting (mm)
EU-2012.2500	rond opaal	2500 x 25 x 24
EU-2041.2500	vlak opaal	2500 x 25 x 14
EU-2042.2500	vlak helder	2500 x 25 x 14



## Eindkapjes

### Art.nr

EU-4117.0012	rond
EU-4117.0010	rond (met kabeldoorvoer)
EU-4147.0012	vlak
EU-4147.0010	vlak (met kabeldoorvoer)

IP-22 / 24V



## Ledstrip 120 leds .mtr CRI 90+

576 lmn / 9,6 Watt per meter

### Art.nr

FLEX-120/A2700	Warm wit	2700K
FLEX-120/A3000	Neutraal wit	3000K
FLEX-120/A4000	Natuurlijk wit	4000K

### Lichtkleur

## Ledstrip 180 leds .mtr CRI 90+

864 lmn / 14,4 Watt per meter

### Art.nr

FLEX-180/A2700	Warm wit	2700K
FLEX-180/A3000	Neutraal wit	3000K
FLEX-180/A4000	Natuurlijk wit	4000K

### Lichtkleur

## Ledstrip 240 leds .mtr CRI 90+

1150 lmn / 19,2 Watt per meter

### Art.nr

FLEX-240/A2700	Warm wit	2700K
FLEX-240/A3000	Neutraal wit	3000K
FLEX-240/A4000	Natuurlijk wit	4000K

### Lichtkleur

## Ledstrip 300 leds .mtr CRI 90+

1440 lmn / 24 Watt per meter

### Art.nr

FLEX-300/A2700	Warm wit	2700K
FLEX-300/A3000	Neutraal wit	3000K
FLEX-300/A4000	Natuurlijk wit	4000K

### Lichtkleur

## Ledstrip CC 112 leds .mtr CRI 85+

1120 lmn / 8 Watt per meter / 140 lmn per Watt

### Art.nr

FLEX-112/CC2700	Warm wit	2700K
-----------------	----------	-------

### Lichtkleur

## Ledstrip TW, RGB, RGBW beschikbaar

Informeer naar de mogelijkheden

24V / 100W

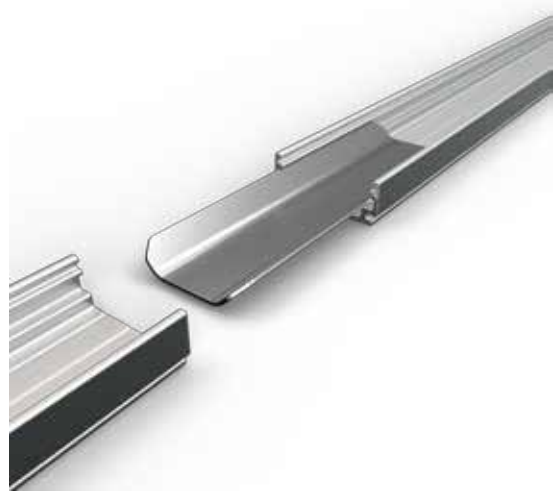


## Voeding en driver in 1

- 4 uitgangen voorzien van Wago steek-klemmen
- Aan te sluiten op een puls-schakelaar
- Compatibiliteit met RF controllers
- Dimbaar 0 - 100%

### Art.nr

L25-24V-100W CV



## Koppelklemmen

### Art.nr

EU-1017.0002

RVS

EU-1017.0003

RVS hoekklem



## RF Controllers

### Art.nr

EU-2801E

Remote 4 zones

EU-2805D

Desk version 1 zone



## Splitters / Connectoren

2 x 0.75mm - 5A

### Art.nr

EU-0752

single color aansluitsnoer 2,5 mtr

EU-0753

singe color verlengkabel 2,5 mtr

EU-0754

2-voudige splitter 1 .mtr - 10A

EU-0755

6-voudige splitter 1 .mtr - 10A



Informeer naar de mogelijkheden

[www.l25led.com](http://www.l25led.com)



**Eenvoudiger en sneller installeren met L25!**

# Extra Long Constant Current Ledstrips

---

Powersupply input from one side !

90 LED's  
30 Meter



60 LED's  
10-15-20 Meter



RGBW  
15 Meter



## Properties 30m / roll - Long Constant Current

Model No.	LED Type	LED Q'ty /meter (pcs)	Rated current (A)	Input voltage (V)	Power / meter (W)	PCB wide (mm)	Color	Lumens / meter (lm)	Color temperature (nm/K)	Length /roll (m)
LL-V36-CC-L30-WW	2835 SMD	90	6.0	36V <sub>dc</sub>	7.2	12	Warm White	1250~1300	2800-3200K	30
LL-V36-CC-L30-NW							Natural White	1300~1350	4000-4500K	
LL-V36-CC-L30-PW							Pure White	1350~1400	6000-6500K	

## Properties 10m / roll

Model No.	LED Type	LED Q'ty /meter (pcs)	Rated current (A)	Input voltage (V)	Power / meter (W)	PCB wide (mm)	Color	Lumens / meter (lm)	Color temperature (nm/K)	Length /roll (m)
LL-V24-CC-L10-WW	2835 SMD	60	5.2	24V <sub>dc</sub>	12.5	10	Warm White	1250~1300	2800-3200K	10
LL-V24-CC-L10-NW							Natural White	1300~1350	4000-4500K	
LL-V24-CC-L10-PW							Pure White	1350~1400	6000-6500K	

## Properties 15m / roll

Model No.	LED Type	LED Q'ty /meter (pcs)	Rated current (A)	Input voltage (V)	Power / meter (W)	PCB wide (mm)	Color	Lumens / meter (lm)	Color temperature (nm/K)	Length /roll (m)
LL-V24-CC-L15-WW	2835 SMD	60	6.5	24V <sub>dc</sub>	10.46	10	Warm White	1250~1300	2800-3200K	15
LL-V24-CC-L15-NW							Natural White	1300~1350	4000-4500K	
LL-V24-CC-L15-PW							Pure White	1350~1400	6000-6500K	

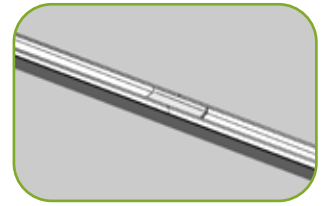
## Properties 20m / roll

Model No.	LED Type	LED Q'ty /meter (pcs)	Rated current (A)	Input voltage (V)	Power / meter (W)	PCB wide (mm)	Color	Lumens / meter (lm)	Color temperature (nm/K)	Length /roll (m)
LL-V24-CC-L20-WW	2835 SMD	60	7.1	24V <sub>dc</sub>	8.5	12	Warm White	1250~1300	2800-3200K	20
LL-V24-CC-L20-NW							Natural White	1300~1350	4000-4500K	
LL-V24-CC-L20-PW							Pure White	1350~1400	6000-6500K	

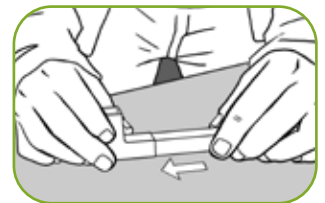
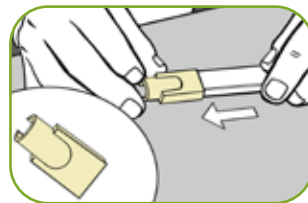
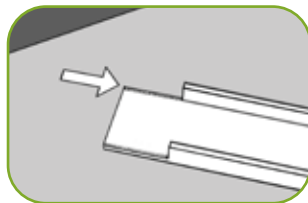
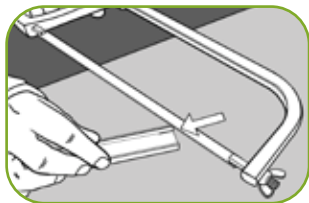
## Properties RGBW 15m / roll

Model No.	LED Type	LED Q'ty /meter (pcs)	Rated current (A)	Input voltage (V)	Power / meter (W)	PCB wide (mm)	Color temperature (nm/K)	Color	Length /roll (m)
LL-RGBW-V24-CC-L15-WW	5050 SMD	60	-	24V <sub>dc</sub>	10	12	2800-3200K	Red: 620 ~ 625 Green: 520 ~ 525 Blue: 460 ~ 465 Amber: 585 ~ 595	15
LL-RGBW-V24-CC-L15-NW							4000-4500K		
LL-RGBW-V24-CC-L15-CW							6000-6500K		

## 1 montage systeem voor iedere toepassing



## Direct aan te sluiten op 25mm kabelgoot



Het led montage systeem voor professionals



[www.l25led.com](http://www.l25led.com)